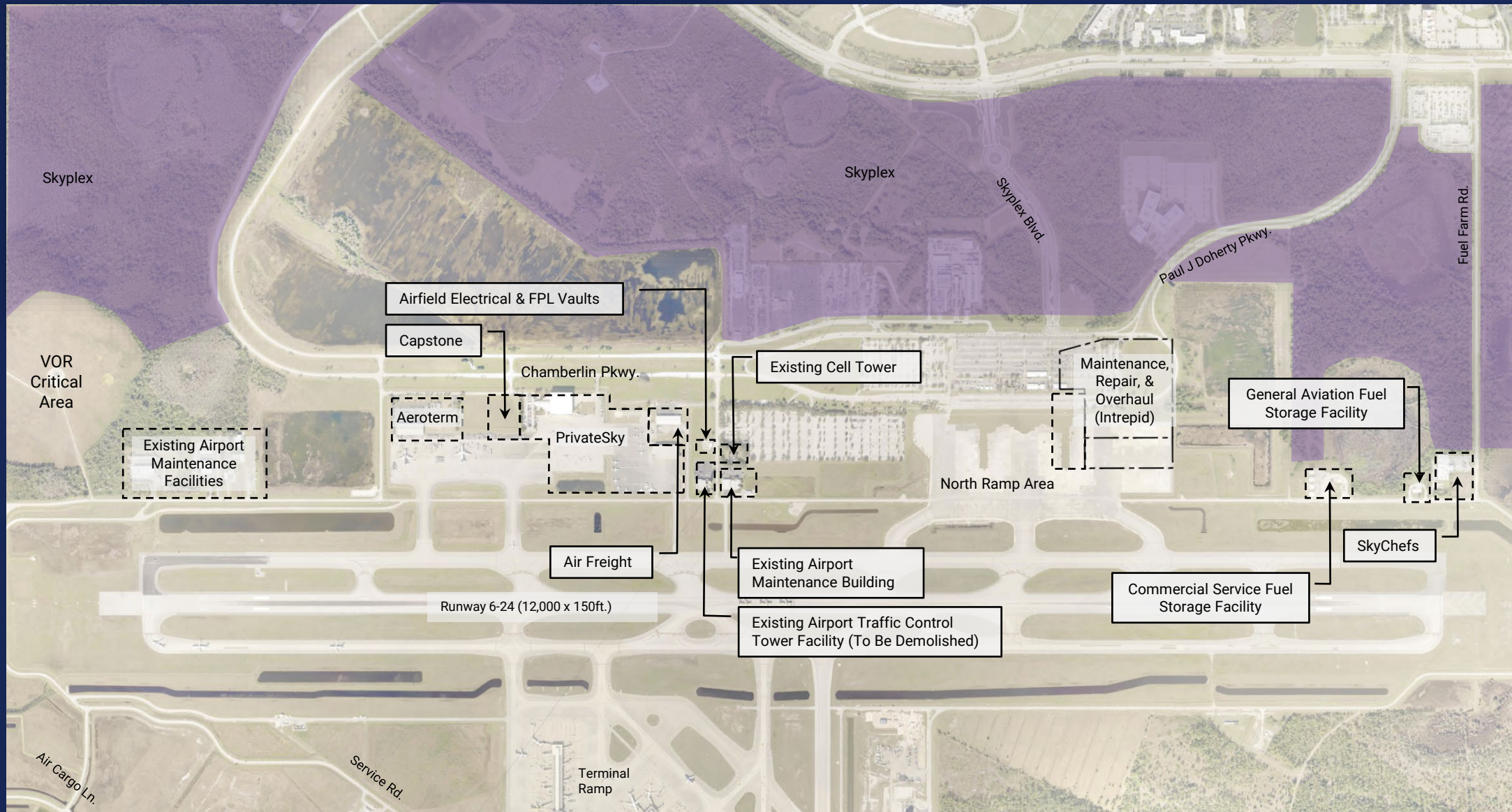








# North Area Plan

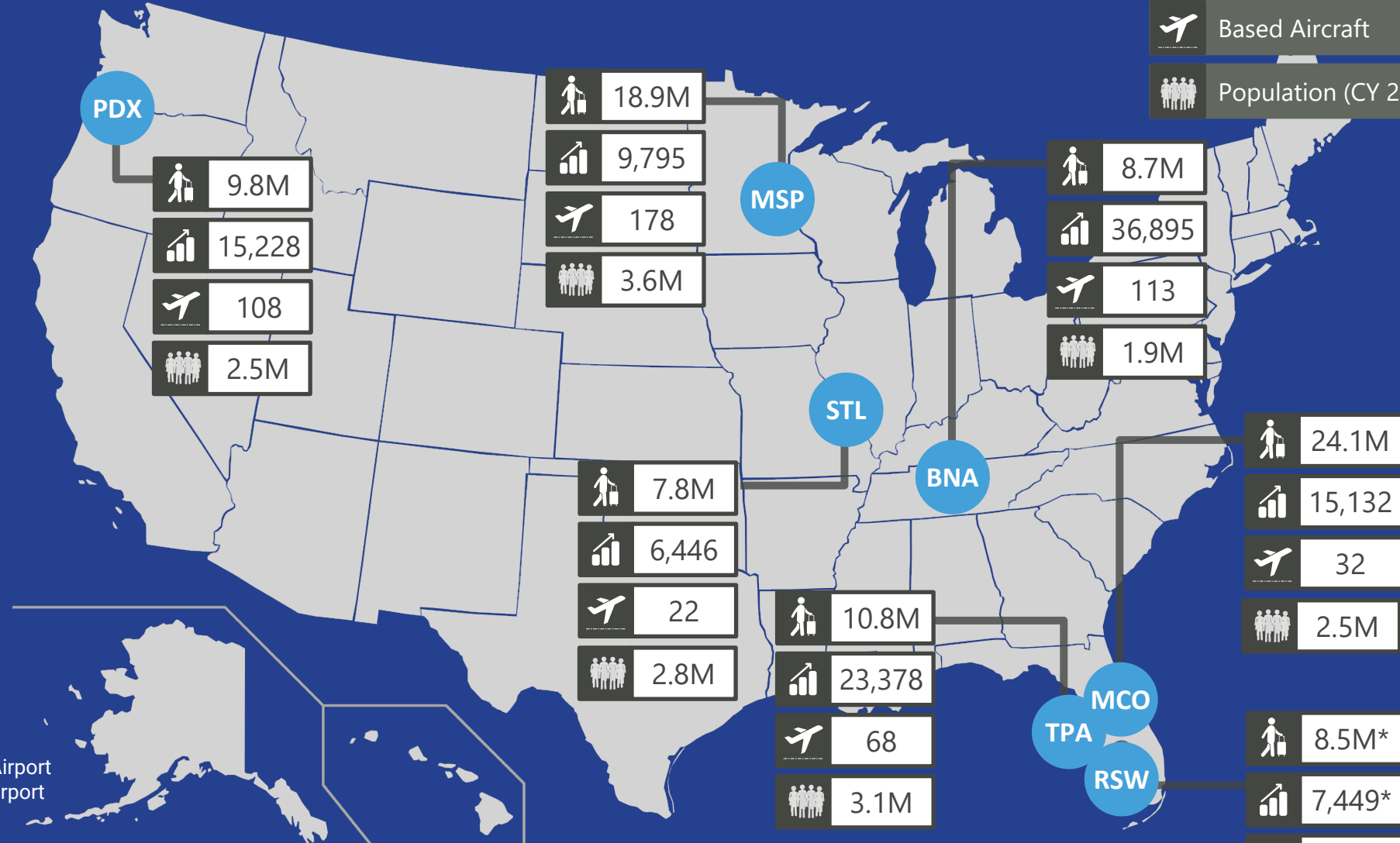


# Existing Conditions



# Benchmarked Airports

-  Million Enplaned Passengers (MEP)
-  Annual General Aviation Operations
-  Based Aircraft
-  Population (CY 2018)



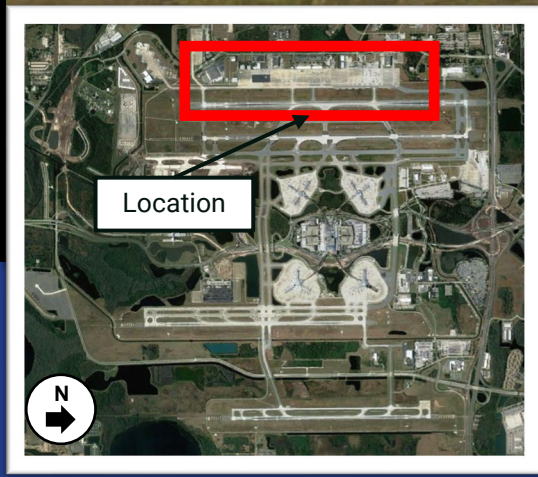
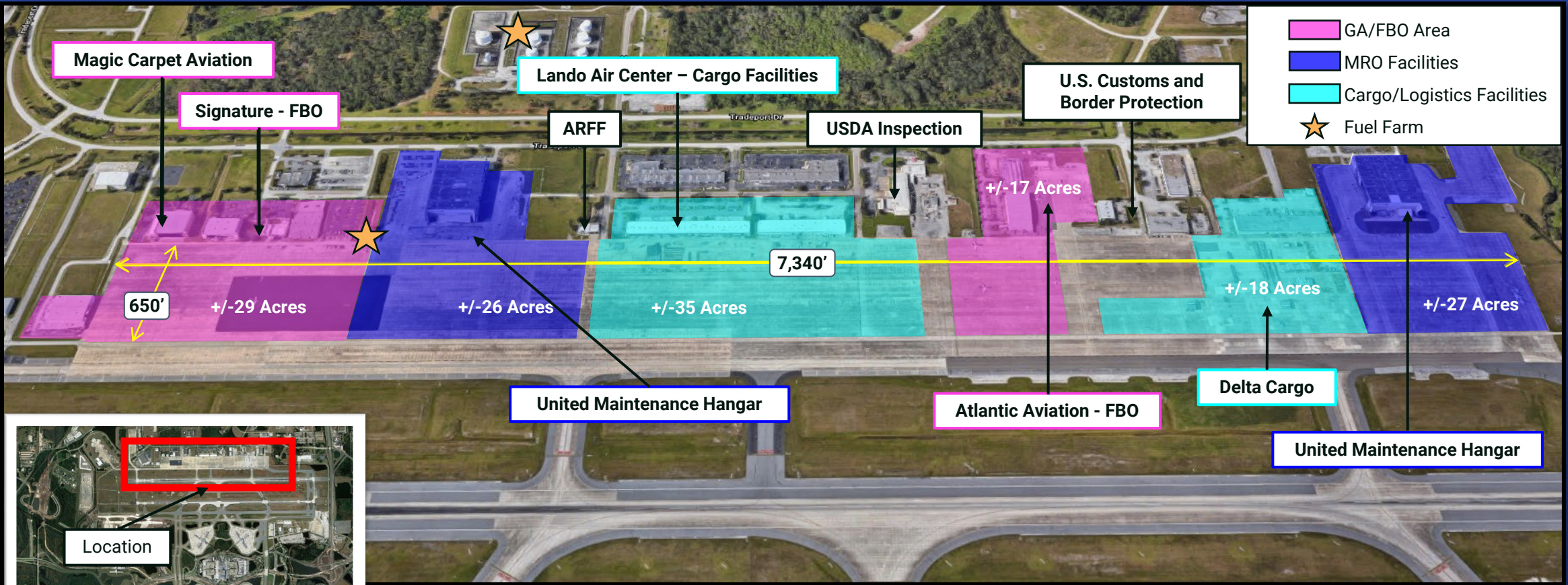
BNA: Nashville International Airport  
 MCO: Orlando International Airport  
 MSP: Minneapolis-Saint Paul International Airport  
 PDX: Portland International Airport  
 STL: St. Louis-Lambert International Airport  
 TPA: Tampa International Airport

\*Indicates Fiscal Year 2040 levels as baseline condition.





# Sample Airport Orlando International Airport (MCO) – Large Hub



Hangar 1: 30,000 sq ft  
 Hangar 2: 23,800 sq ft  
 FBO Terminal: 13,600 sq ft  
 Hangar 3: 41,000 sq ft

MRO Facility 1: 110,000 sq ft  
 Cargo Facility 1: 59,400 sq ft

Hangar 4: 26,000 sq ft  
 Hangar 5: 26,000 sq ft  
 FBO Space: 9,800 sq ft

MRO Facility 2: 110,000 sq ft  
 Cargo Facility 1: 47,000 sq ft



# Benchmarking Summary

## Minimum and Maximum Facility Land Use Area per Airport

Airport (City)	MCO (Orlando)	BNA (Nashville)	STL (Saint Louis)	PDX (Portland, OR)	TPA (Tampa)	MSP (Minneapolis – Saint Paul)	LAL (Lakeland)	RFD (Chicago Rockford)	AUS (Austin)	Average Acreage
<b>Cargo/ Logistics Area</b>	53 Acres <small>(2 Areas: 18-35 Acres)</small>	74 Acres <small>(3 Areas: 18-30 Acres)</small>	26 Acres <small>(1 Area: 26 Acres)</small>	95 Acres <small>(1 Area: 95 Acres)</small>	37 Acres <small>(4 Areas: 1-22 Acres)</small>	116 Acres <small>(4 Areas: 10-66 Acres)</small>	N/A	N/A	N/A	70 acres <small>(Multiple Users)</small>
<b>GA/FBO Area</b>	46 Acres <small>(2 Areas: 17-29 Acres)</small>	79 Acres <small>(3 Areas: 7-38 Acres)</small>	32 Acres <small>(2 Areas: 14-18 Acres)</small>	49 Acres <small>(1 Area: 49 Acres)</small>	63 Acres <small>(5 Areas: 1-58 Acres)</small>	33 Acres <small>(1 Area: 33 Acres)</small>	N/A	N/A	N/A	50 Acres <small>(Multiple Users)</small>
<b>MRO Area</b>	53 Acres <small>(2 Areas: 26-27 Acres)</small>	42 Acres <small>(2 Areas: 19-23 Acres)</small>	12 Acres <small>(1 Area: 12 Acres)</small>	39 Acres <small>(2 Areas: 14-20 Acres)</small>	41 Acres <small>(3 Areas: 8-17 Acres)</small>	31 Acres <small>(2 Areas: 6-25 Acres)</small>	N/A	N/A	N/A	40 Acres <small>(Multiple Users)</small>
<b>E-commerce Area</b>	N/A	N/A	N/A	N/A	N/A	N/A	38 Acres	33 Acres	N/A	36 Acres <small>(Single Facility)</small>



# Benchmarking Recommendations

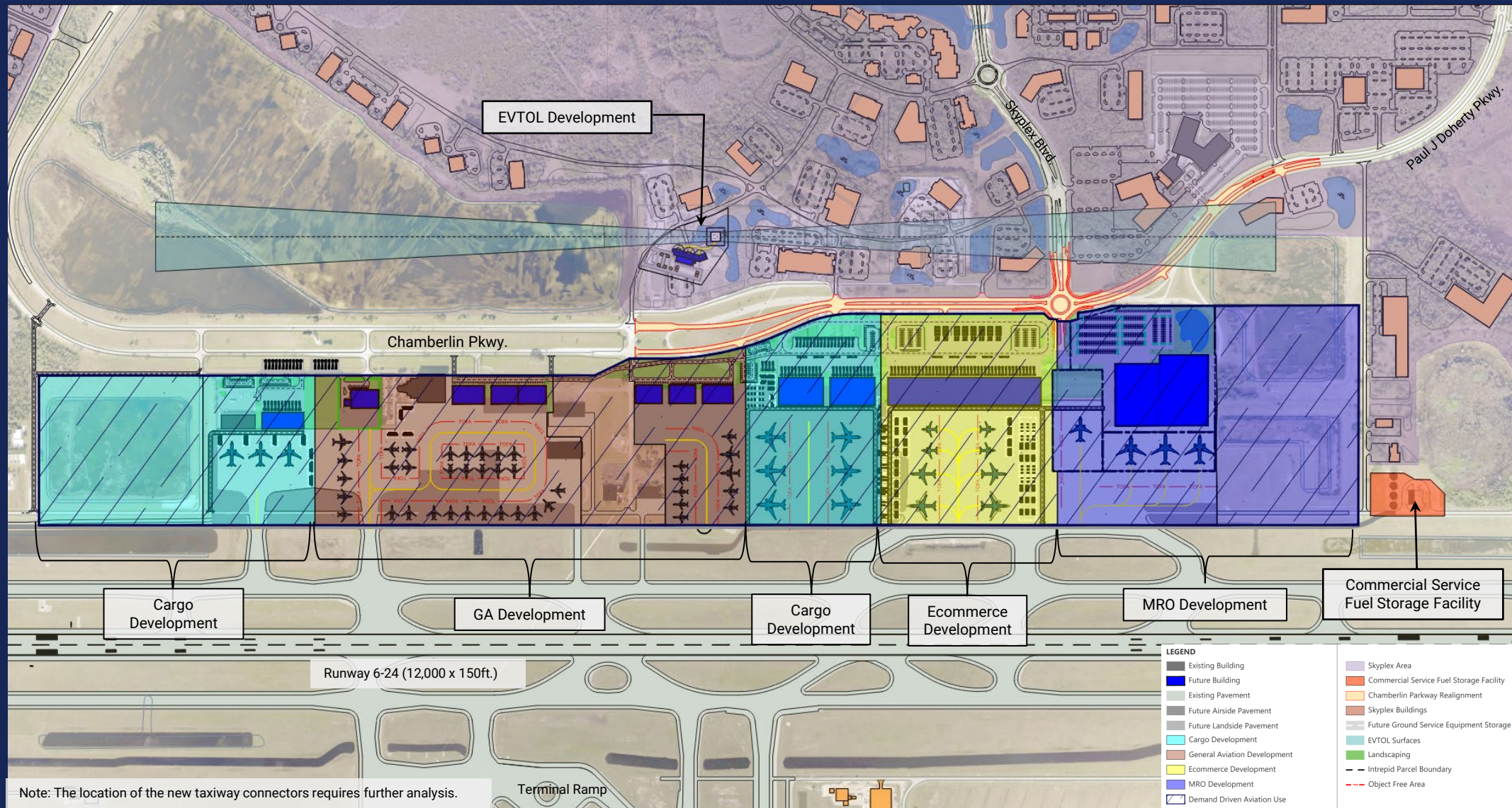
## Minimum and Maximum Facility Area Ranges per Land Use

Facility Area	Building Size	Apron Depth	Landside Area Depth	Benchmark Land Use Areas	North Ramp Land Use Planning Targets
<b>Cargo Facility</b>	9,000 - 304,000 sq ft	210 - 880 feet	90 - 450 sq ft	26 - 116 Acres	70 Acres
<b>GA Facilities</b>	6,000 - 64,000 sq ft	240 - 650 feet	85 - 270 ft	31 - 79 Acres	50 Acres
<b>MRO Facilities</b>	14,400 - 235,200 sq ft	205 - 650 feet	120 - 400 ft	14 - 53 Acres	40 Acres



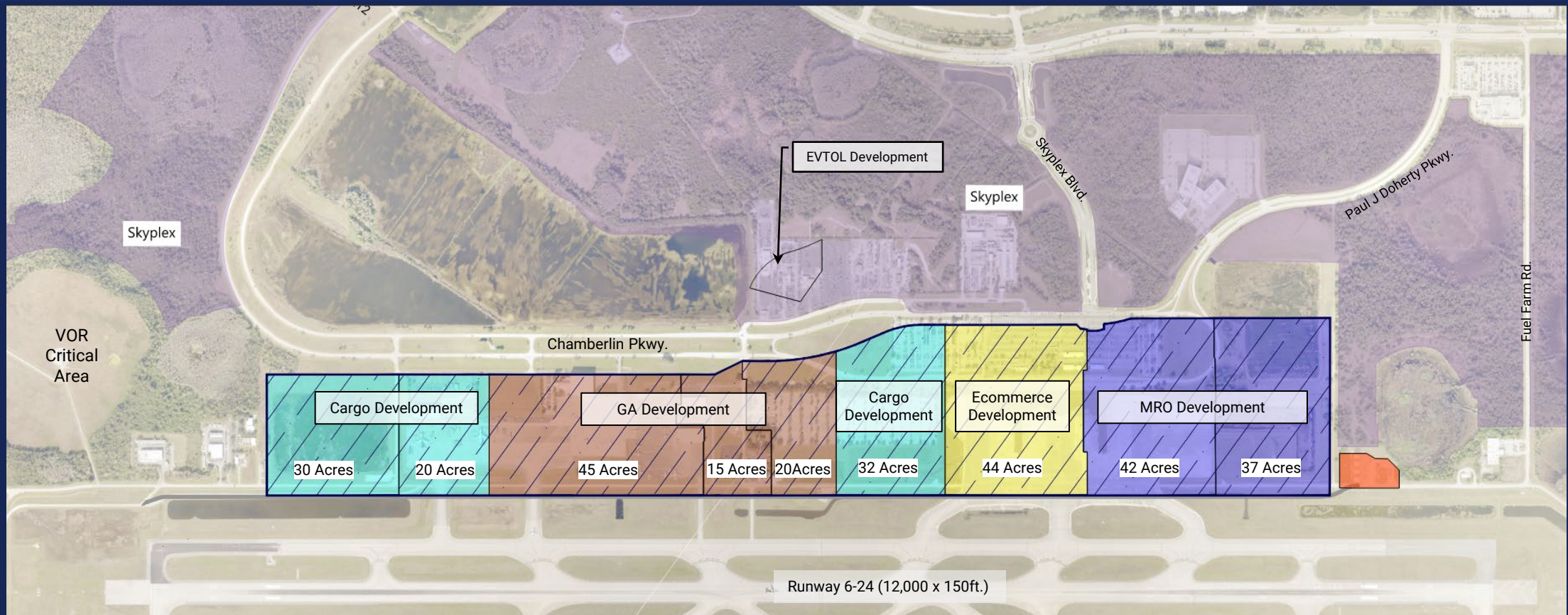


# Recommended Vision Plan





# Recommended Land Use Plan



Facility Area	North Ramp Land Use Planning Targets	Land Use Area As Depicted
<b>Cargo Facility</b>	70 Acres	± 82 Acres
<b>GA Facility</b>	50 Acres	± 80 Acres
<b>MRO Facility</b>	40 Acres	± 79 Acres
<b>E-Commerce Facility</b>	36 Acres	± 44 Acres

**LEGEND**

- Cargo Development
- General Aviation Development
- Ecommerce Development
- MRO Development
- Demand Driven Aviation Use
- Skyplex Area
- Commercial Service Fuel Service Facility

