



Southwest Florida
International Airport(RSW)

RSW Master Plan Update

Presentation #4
May – June 2023

LCPA

Mike Arnold (ESA)
MPU Author

Laura DeJohn (JEI)
Project Manager

Pete Ricondo
(Ricondo)
Senior Advisor

Sebastien Carreau
(Ricondo)
QA/QC

Forecasting

Airfield

Airspace

Support
Facilities

Terminal

Landside:
Roadway &
Curbfront

Landside -
Parking &
Rental Cars

Non-Aviation
Lands &
Utilities

Environmental
&
Sustainability

CIP

ALP

Public
Involvement

(C&S Companies)

(TransSolutions)

(Ricondo)

(ESA)

(RS&H)

(ESA)

Darin Larson
Kevin McCauley
(Atkins)

(Ricondo)

(STUDIO4
ARCHITECTURE)

(VTC)

(Faith Group)

(AECOM)

(Ricondo)

(Kimley-Horn)

(Kimley-Horn)

(ESA)

(JEI)

(JEI)

(Ricondo)

(Martinez)

Survey
(Brown &
Phillips)

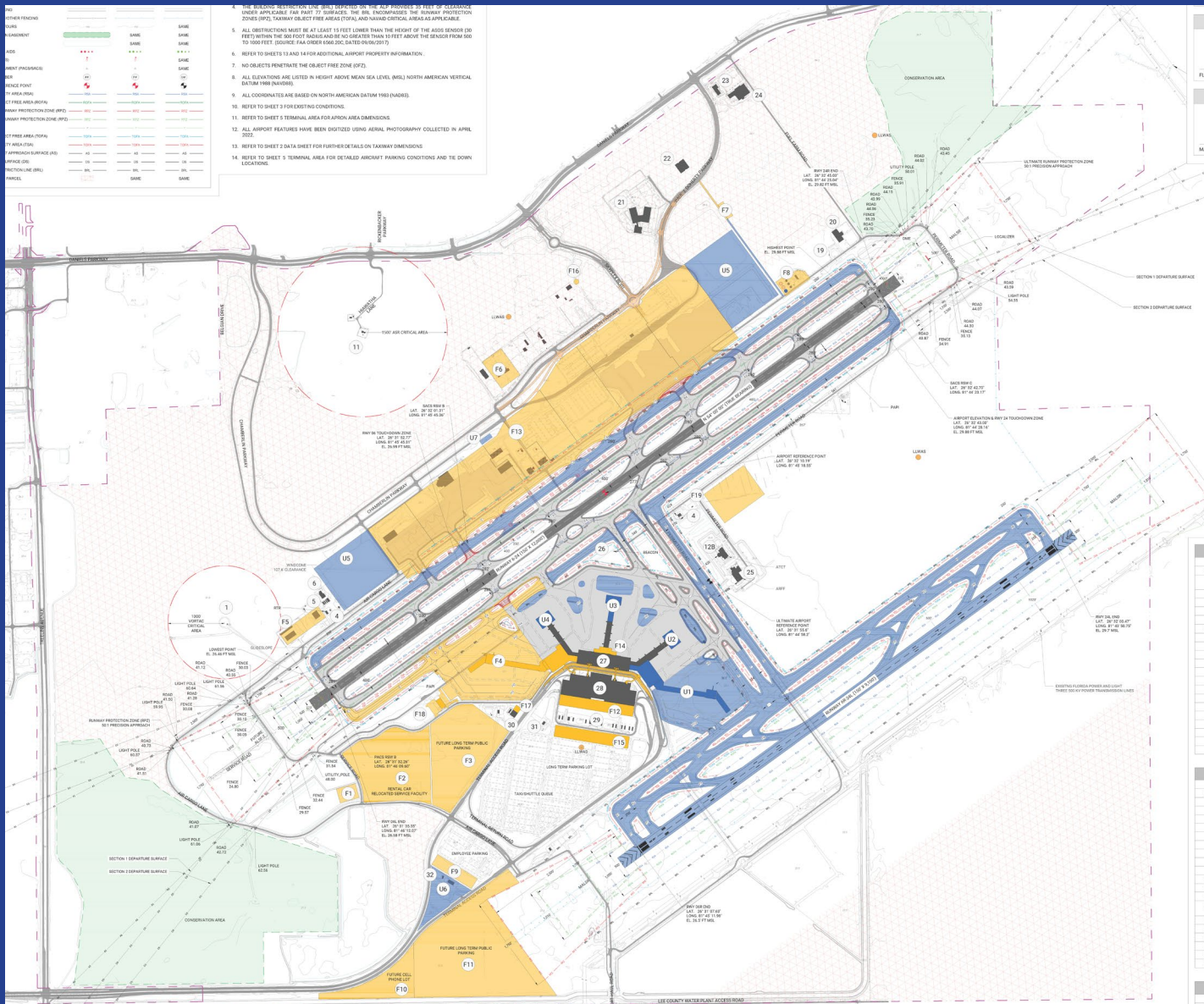
(Ricondo)

(Cella Molnar)

Two-year Action Plan



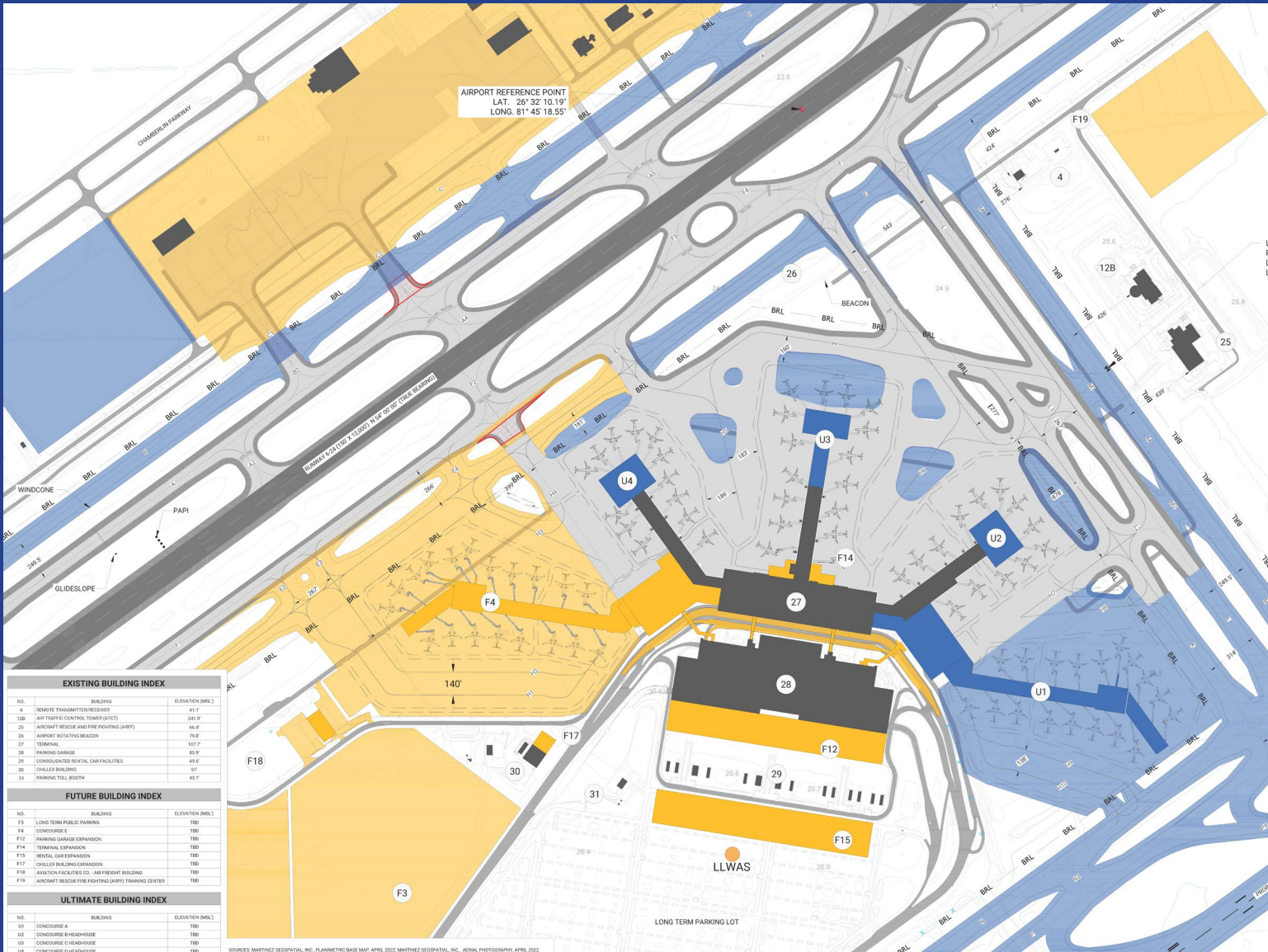
Airport Layout Plan (ALP)

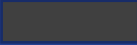





- Existing Facilities
- Facility Needs Through 2041
- Ultimate (beyond 2041) Facilities
- Conservation Area
- Non-Aviation



ALP – Terminal Area Plan



-  Existing Facilities
-  Facility Needs Through 2041
-  Ultimate (beyond 2041) Facilities
-  Pavement Removal

EXISTING BUILDING INDEX		
NO.	BUILDING	ELEVATION (MSL)
4	REMOTE TRANSMITTER/RECEIVER	43.7
12B	AIR TRAFFIC CONTROL TOWER (ATCT)	245.7
25	AIRCRAFT RESCUE AND FIRE FIGHTING (ARFF)	14.4
26	AIRCRAFT ROTATING BEACON	79.8
27	TERMINAL	157.7
28	PARKING GARAGE	55.7
29	CONSOLIDATED RENTAL CAR FACILITIES	49.8
30	CHALLENGER BUILDING	67
31	PARKING TOLL BOOTH	43.7

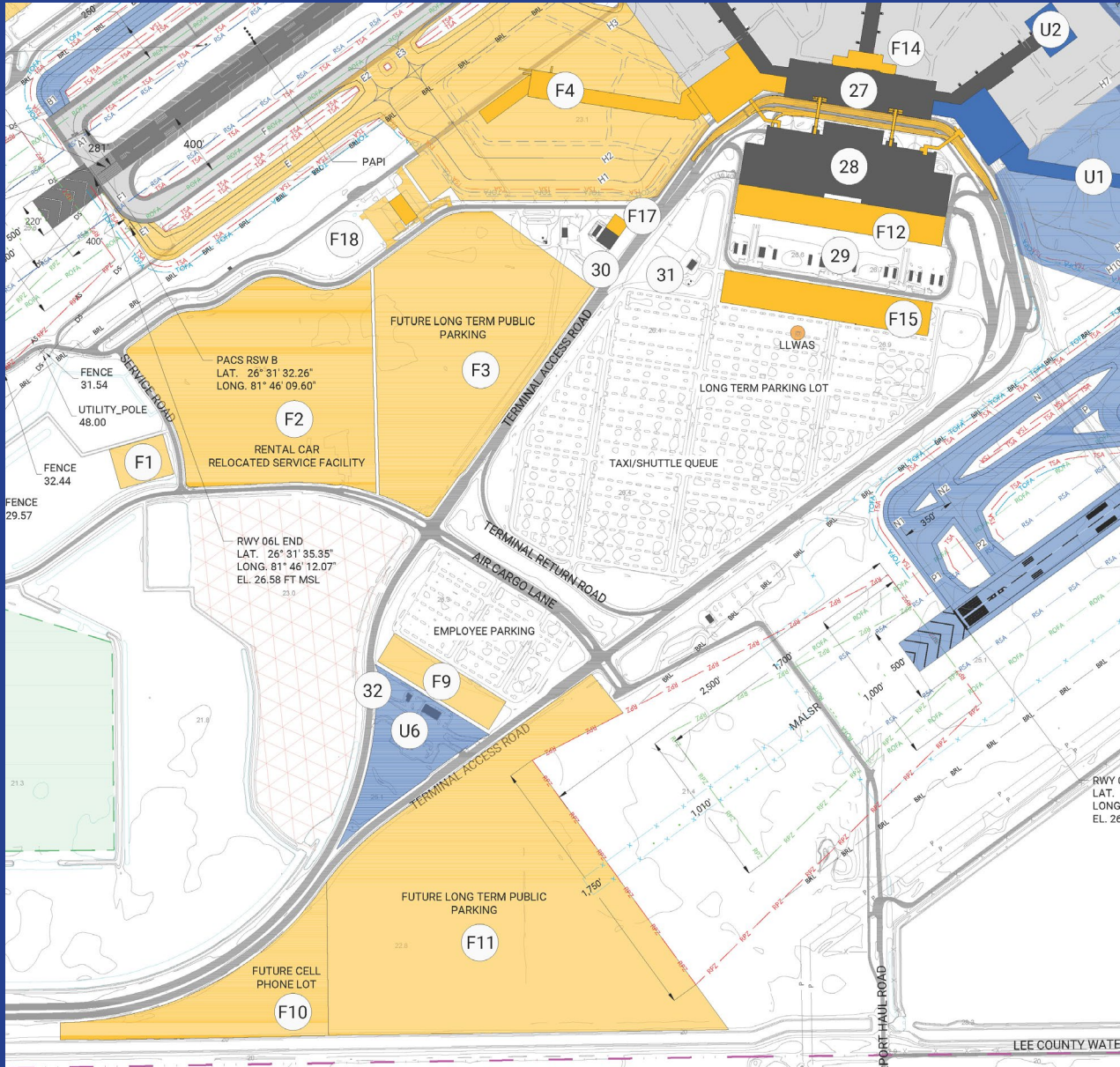
FUTURE BUILDING INDEX		
NO.	BUILDING	ELEVATION (MSL)
F3	LONG TERM PUBLIC PARKING	TBD
F4	CONCOURSE E	TBD
F12	PARKING GARAGE EXPANSION	TBD
F14	TERMINAL EXPANSION	TBD
F15	RENTAL CAR EXPANSION	TBD
F17	CHALLENGER BUILDING EXPANSION	TBD
F18	AVIATION FACILITIES CO. AIR FRESHEN BUILDING	TBD
F19	AIRCRAFT RESCUE FIRE FIGHTING (ARFF) TRAINING CENTER	TBD

ULTIMATE BUILDING INDEX		
NO.	BUILDING	ELEVATION (MSL)
U1	CONCOURSE A	TBD
U2	CONCOURSE B HEADHOUSE	TBD
U3	CONCOURSE C HEADHOUSE	TBD
U4	CONCOURSE D HEADHOUSE	TBD

SOURCES: MARTINEZ GEOSPATIAL, INC., PLANNIMETRIC BASE MAP APRIL 2022; MARTINEZ GEOSPATIAL, INC., AERIAL PHOTOGRAPHY, APRIL 2022



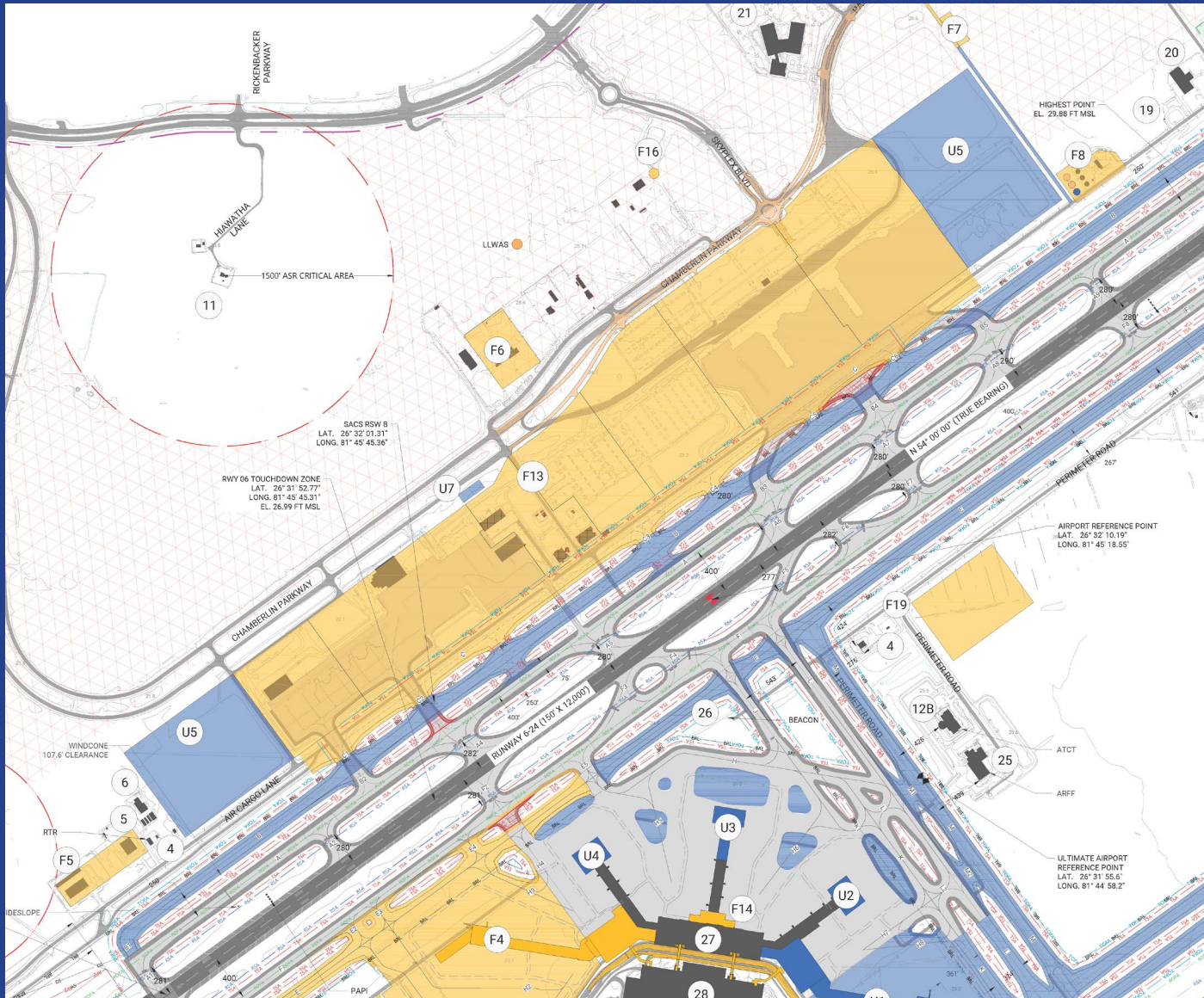
ALP – South Support Facilities

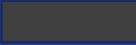


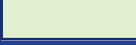



- Existing Facilities
- Facility Needs Through 2041
- Ultimate (beyond 2041) Facilities
- Conservation Area
- Non-Aviation



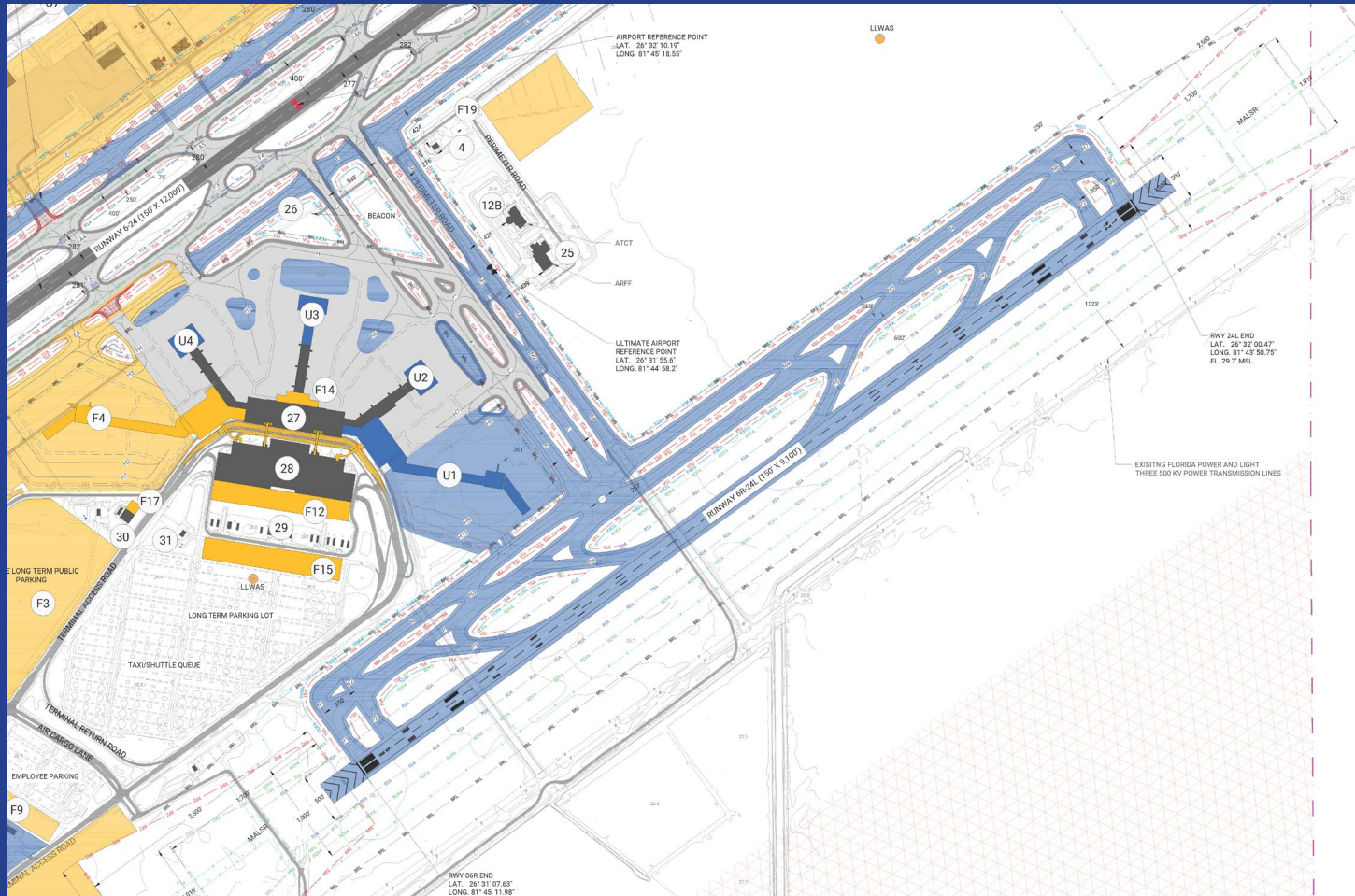
ALP – North Area Plan








-  Existing Facilities
-  Facility Needs Through 2041
-  Ultimate (beyond 2041) Facilities
-  Conservation Area
-  Non-Aviation

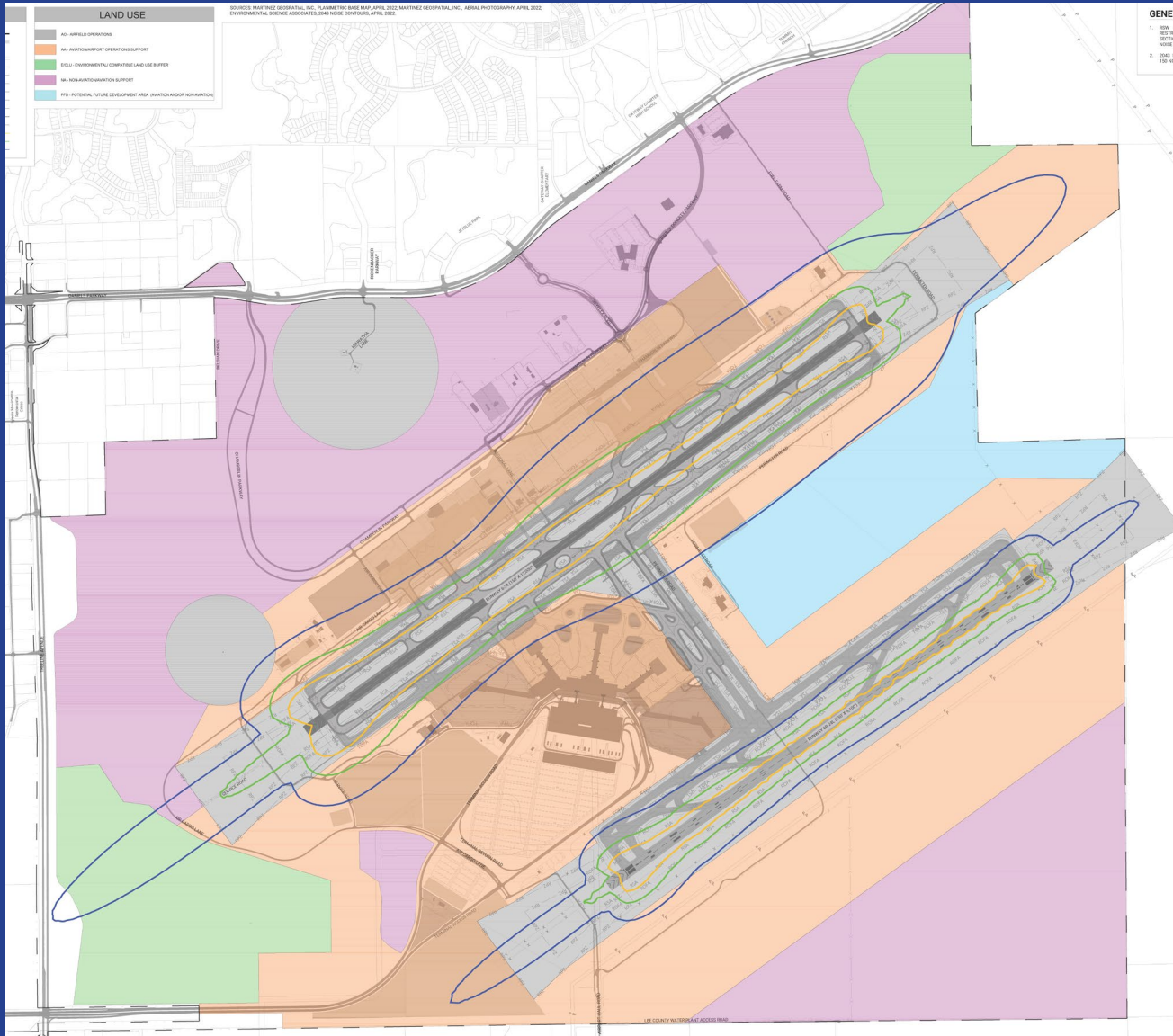


ALP – Ultimate (Post 2041) Development



-  Existing Facilities
-  Facility Needs Through 2041
-  Ultimate (beyond 2041)
-  Pavement Removal
-  Non-Aviation

Airport Land Use Plan



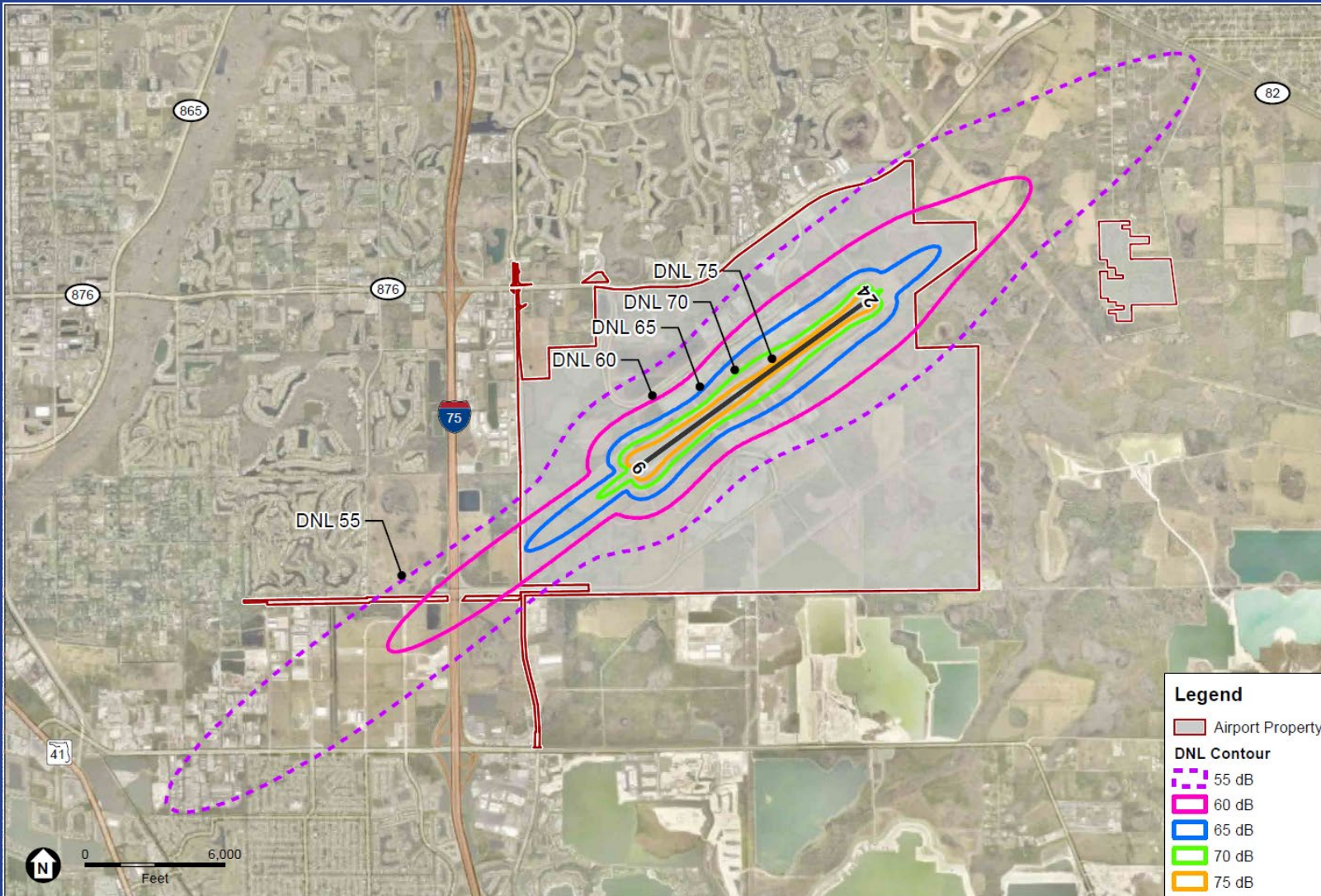
-  Aviation/Airport Support
-  Non-Aviation/Airport Support
-  Environmental
-  Potential Aviation/Non-Aviation
-  Airfield Operations

Environmental Overview

- 1994 - Environmental Approval – Finding of No Significant Impact (FONSI)
 - 7,000-Acre Mitigation Park
- 2022 - Review of prior environmental approvals against current NEPA standards
 - Noise
 - Wetlands & Wildlife
 - Air Quality
- 2022 - Environmental review concluded all proposed airport projects through 2041 are under current environmental thresholds of significance
 - Does not include third-party leases/developments

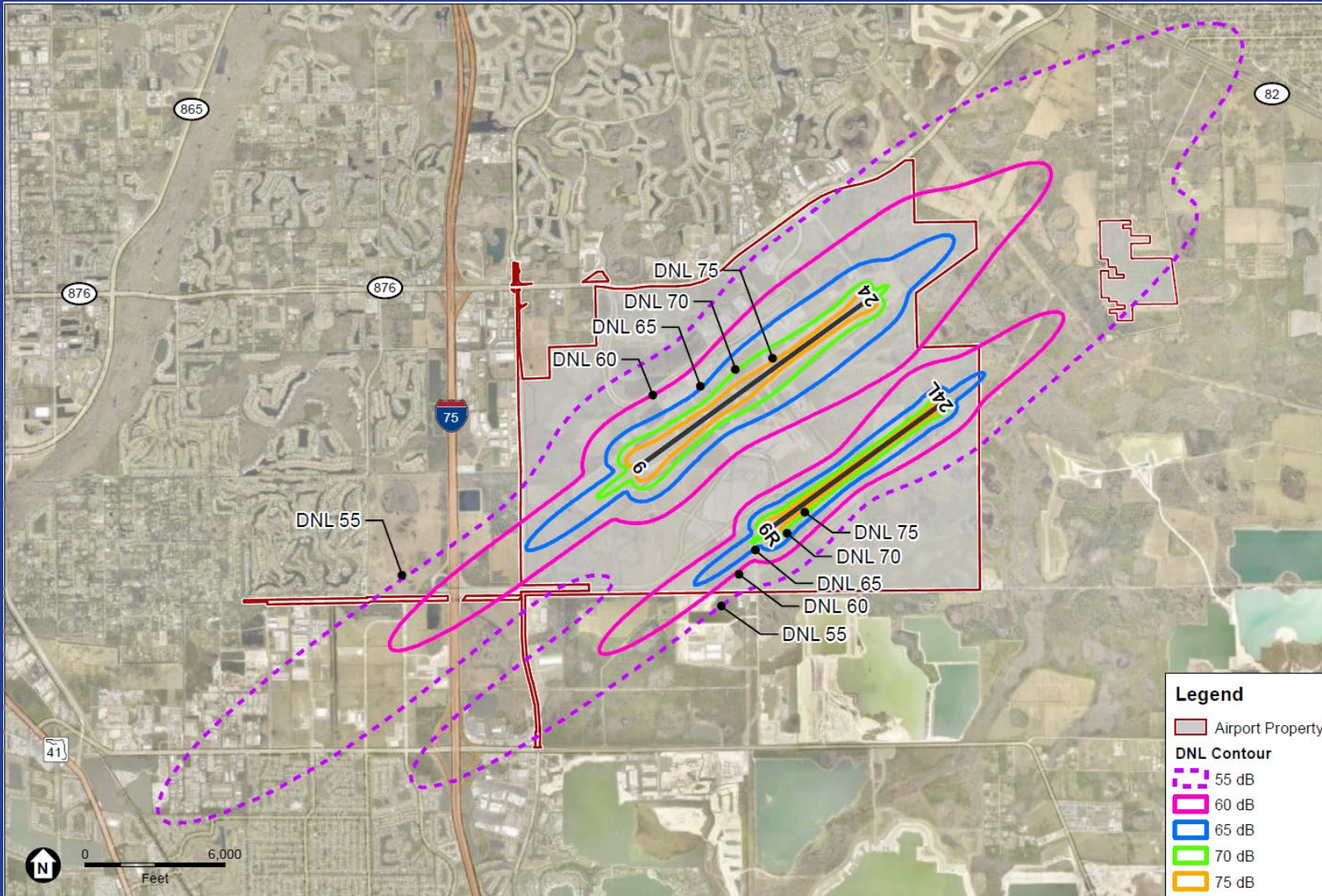


Noise - 2022



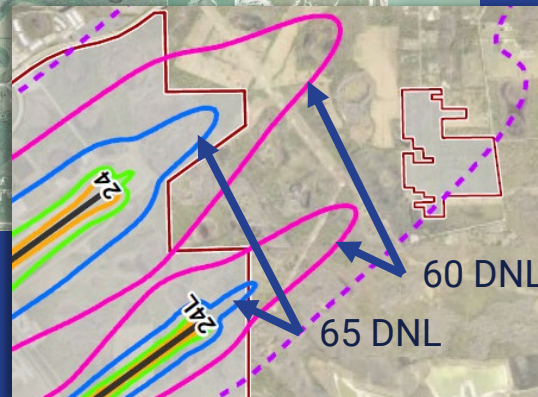
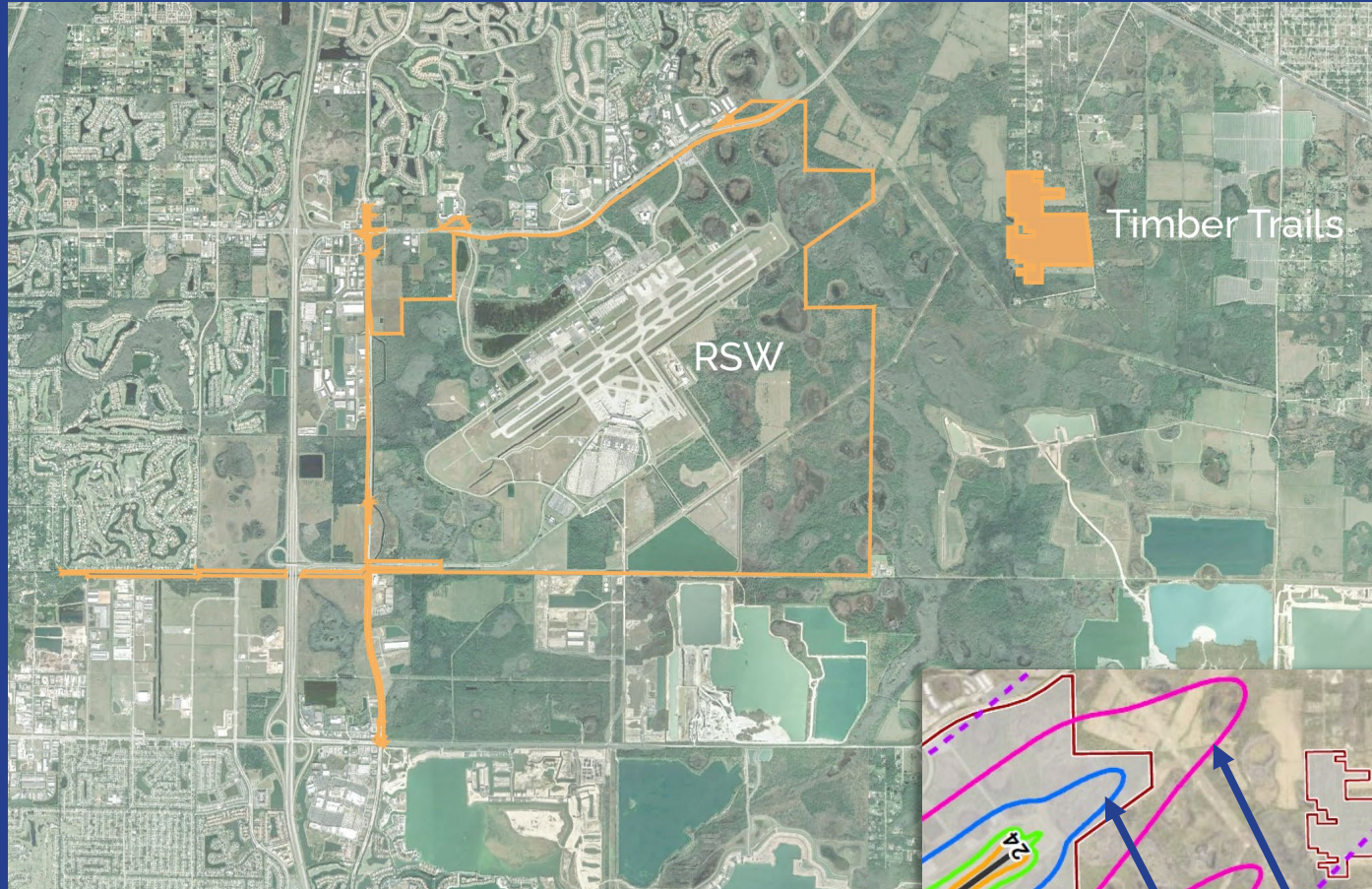
- FAA considers anything outside 65 DNL contour as compatible
- 65 DNL contour within RSW boundary

Noise – 2041+



- FAA considers anything outside 65 DNL contour as compatible
- 65 DNL contour within RSW boundary

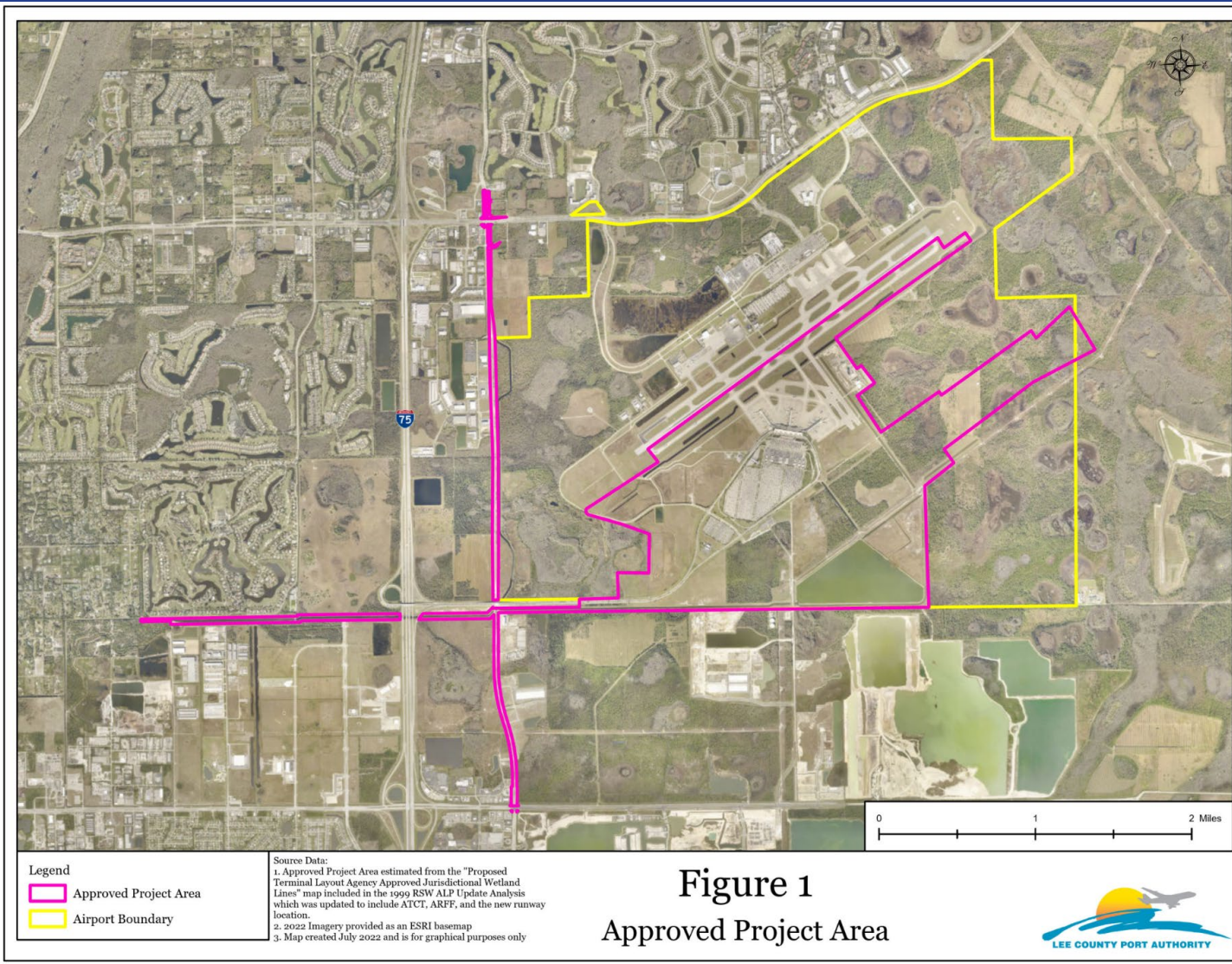
Timber Trails



- Rural ranchette lands acquired based on previous noise studies
- The 65 DNL noise contour for the future Parallel Runway will be clear of the Timber Trails property.
- Recommend disposing of Timber Trails lands & aviation easements.
- Airport Compliance Manual advises to dispose of land no longer needed and recommended by Lee County Attorney's Office.

Wetlands & Wildlife

- LCPA has secured all environmental regulatory permits (SFWMD & USACOE) for all 1994 FONSI projects within the RSW Project Area
- LCPA to keep permits active & evaluate against current conditions at time of construction



Air Quality

- An emission inventory was conducted for 2021 and 2041+ activity levels:
 - carbon monoxide (CO)
 - nitrogen dioxide (NO₂)
 - ozone (O₃)
 - sulfur dioxide (SO₂)
 - particulate matter (PM 10 and 2.5)
 - and lead (Pb)
- The United States EPA has designated Lee County as in attainment for all National Ambient Air Quality Standards (NAAQS) and a General Conformity determination is not required.

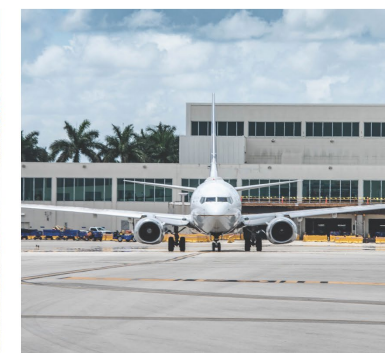


10-Year Capital Improvement Plan - Summary

- 36 projects
- Total Cost Estimate for projects through 2031 = \$1.8 Billion
- Funding Plan:
 - Airport Funds/Revenues
 - Federal Grants (FAA, TSA, etc.)
 - State Grants (FDOT, etc.)
 - User Fees (PFCs, CFCs, etc.)

Master Plan Document

- 2+ year effort
- Required to be eligible for FAA and FDOT grants
- 280 pages
- Four rounds of public presentations and involvement
- Fully coordinated with Lee County staff for review and comment



Next Steps

- Incorporate ASMC/Board discussion/comments
- Transmit draft documents to FAA, FDOT & Lee County staff for review and comment
- Incorporate comments into Master Plan document
 - Minor revisions to be incorporated by LCPA staff
 - Substantive revisions to be endorsed by the Board
- Publish final RSW Master Plan Update on LCPA website
- Incorporate new Master Plan and ALP into other governing documents

Thank You

